



Clearway

Clearway -an Introduction

Clearway is technical product and safe to use, non hazardous safe for plants, animals and non aggressive to surfaces.

Clearway is highly effective on all surfaces and may be used in traditionally sensitive areas.

Some competitor products that are seen as the only current solution are known to be extremely hazardous to the environment (such as acids and bleach).

Clearway products have been developed for use in a wide variety of applications such gardens and commercial applications. They are already approved in food production environments and are safe to use. Clearway is approved by the HSE and used by a number of government bodies.

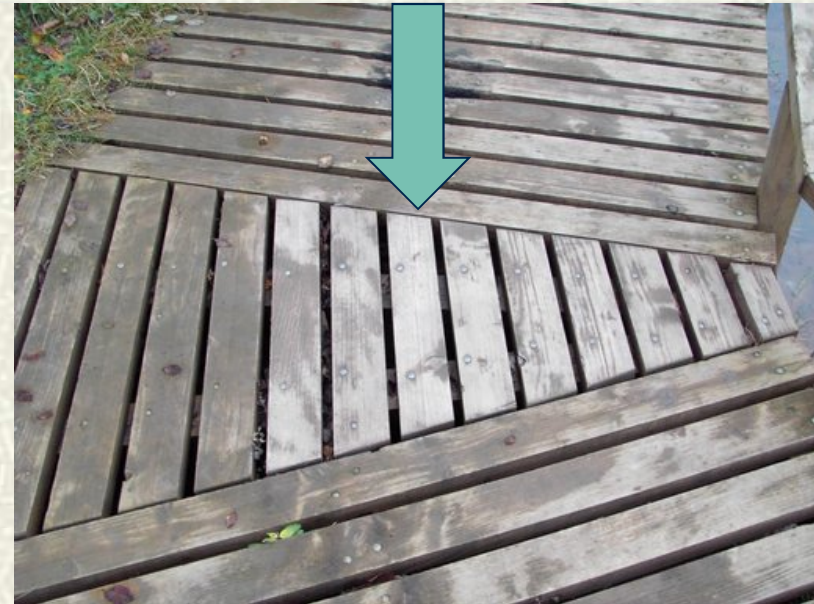
Clearway as a Cleaner

Clearway can be used as a cleaner to remove algal and fungal growth from wood, for both aesthetics and as a safety feature (to remove the slippery effects of microbial growth).

Pre brush area and apply water based Clearway.



4 days later, after 2 days of continuous Manchester rain. The treated surfaces are dry and virtually non slip.



Clearway treatment on Wood



Clearway

Clearway Treatment on Stone

Treatment for safety and aesthetics.



Remove the leaves from the step.



Apply Clearway

Despite 2 days of typical Manchester weather, a dry and virtually non slip surface remains.



Clearway – Treating Wood Fencing

Clearway

By taking Clearway concentrate and diluting 1 part concentrate to 9 parts water, we commenced a trial on a variety of surfaces around a domestic residence. The product was applied (using a proprietary dispensing unit from a garden centre) by spraying under minimal pressure a non hazardous formula.

The product was applied (Manchester, England) in relatively dry conditions (ambient temperature approx 10 degrees Celsius). 12 hours after this photograph was taken the heavens opened and it rained persistently for two days.



Clearway (353 Day Results)

Prior to application



4 days later



353 days later

Clearway

Clearway

Clearway (352 Day Results)

Prior to application



4 days later



352 days later

Clearway (Effect on Plants)

Clearway

The “ready for use” product was applied directly to these surfaces without any pre-cleaning nor abrasion to the surface. Neither has there been any attempt to remove the “dead” debris that remains on the panels.

At this concentration, there is no danger to plants and shrubs that come into contact with Clearway.



Clearway (Effect on Plants 365 days later)



Clearway

Clearway

Clearway on Paths

In the next sequence of photographs, we prepared the area, prior to applying the “ready for use” product, by using a yard brush. This was to see if we could disrupt the biofilm sufficiently to allow the Clearway to have an impact on the micro-organisms that made the flagstones slippery.



Clearway on Paths (4 Days Later)



Results from the application 4 days later. The resultant surfaces were slip free and the green organisms were disappearing whilst the black were “in retreat”.



Clearway as a Biofilm remover

The action of Clearway removes biofilms and as a result reduces the time and energy required for future cleaning.

Biofilm is a collection of different microbes brought together by quorum sensing and is particularly difficult to remove using ordinary disinfectants. If you cannot remove the biofilms, you cannot clean effectively.

The following photographs demonstrate that Clearway removes biofilms and that the surface is easier to clean afterwards.

The signs were cleaned once with a Clearway solution and the surface remained clear of dirt for a considerable period of time.



Clearway as a Sign Cleaner (Manchester)



Clearway

Clearway as a Sign Cleaner (354 days later Manchester)



4 days later



354 days later



Clearway as a Sign Cleaner



This sign is located 20 feet from the previous sign and was treated with Clearway seven months prior to this picture being taken



Clearway as a Sign Cleaner 18 months later



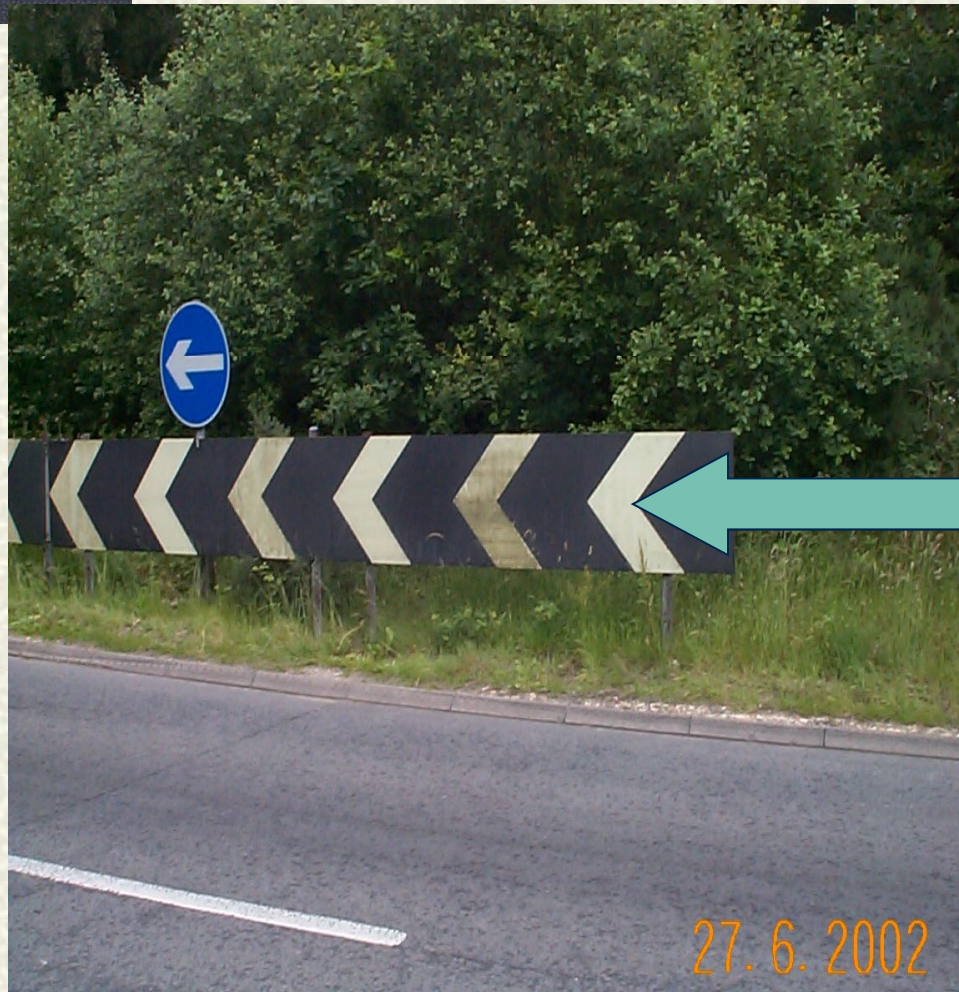
4 days after application

18 months later



Clearway as a Sign Cleaner

Clearway



Alternate chevrons on the road sign were cleaned with Clearway and the photograph was taken six months later.

Clearway Summary



As a Treatment for Green Algae and Biofilms.

- Clearway removes green algae from all surfaces and.
- inhibits the re-growth for up to 12 months
- Clearway is safe to use around plants, ponds and pets
- Clearway is safe to use around children
- Clearway in use dilution has no hazardous chemicals
- Clearway requires no scrubbing or elbow grease.
- Clearway is available in 500ml, 1000ml, 5L and 20L
- pack sizes

Clearway Contact Details

Clearway Byotech Ltd

18 Dalby Court

Gadbrook Business Centre

Northwich

Cheshire

CW9 7TN

TEL: 01606 330252

Fax: 01606 330231

Email: sales@clearwaybyotech.co.uk

Website www.clearwaybyotech.co.uk

